

COLOR CHART

*AVAILABLE SEPTEMBER 2019: 6NB, 6G, 6C AND 6R

N - NATURAL

Equal parts primary colors; Red, Yellow, Blue.

NB - NATURAL BEIGE

Beige is a blend of White and Natural Brown. Enhanced with a slight Red/Brown tone.

NA - NATURAL ASH

A Blue Green blend.

G - GOLD

A true pigmented Gold, mixture of Yellow & Brown.

WG - WARM GOLD

Blended Gold and Copper.

C - COPPER

Equal blend of Gold & Red.

R - RED

Vibrant and rich.

B - BLUE

Pure cool.

V - VIOLET

Cool warm.

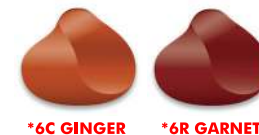


8N SANDALWOOD

MIXING PURE COLOR LEVEL 8 MIX 2 PARTS 9 : 1 PART 7



3N DARK CHOCOLATE 3NB ESPRESSO



USE 00 BASSU CLEAR

1. To soften the pigment of any Pure Color.
2. Equal Parts 7vol ECA for Shine Color Clarity Treatment. Apply to damp or dry hair, process 20 minutes, shampoo and condition with Trinity Color Care.



00 BASSU CLEAR



MIXING PURE COLOR

Equal parts ECA & average processing minutes:
Demi 7vol. 20min.
Tone 7vol. 5 - 20min.
Permanent 20vol. 35min.
Base Break 1 Level & Tone 20vol. 15 - 25min.
Base Break 2 Levels & Tone 30vol. 20 - 30min.

RESISTANT GREY & +50% GREY:

Formulate with 50% or more N series, then introduce additional desired tones.



MIXING PURE BLONDE LIGHTENER

Lift to your desire while maintaining condition. Mix 1 part Lightening Powder to 2 parts ECA. Ex: 10 gm powder to 20 gm ECA. Always measure.

- 7 Vol for 1 to 2 levels of lift.
- 20 Vol for 2 to 3 levels of lift.
- 30 Vol for 3 to 5 levels of lift .
- 40 Vol lifts 20% faster and up to 6 levels while maintaining healthy hair.



COLOR & LIGHTENER THICKENER

Add up to ¼ of total formula and mix well. Will not effect deposit, lift or processing time.

TONE & CORRECTIVE COLOR REPIGMENTATION

NATURAL BASE 'PURE COLOR' ●●●●

Surface Pure Color Natural Series is formulated with equal parts of the three primary colors. The equal balance of Red, Yellow and Blue provides rich natural tones. A True Neutral Base without additional warm or cool tones provides for easy formulations, natural grey coverage and soft on tone fading. The Natural Base allows for easy complete control, if you want your Pure Color warmer formulate N with G series. Example: 3 parts 7N + 1 part 7G. If you want Pure Color cooler formulate with B series. Example: 3 parts 7N + 1 part 7B.

WARM BASE ●●●●

American formulated color lines primarily have a warm base one part red, one part blue and two parts yellow. Their warm base gives solid, warm grey coverage and fades warm.

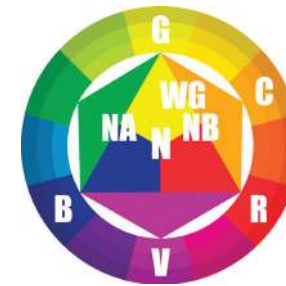
COOL BASE ●●●●

European formulated color lines primarily have a cool base one part red, one part yellow and two parts blue. Their cool base helps offset warmth and fades cool.

PURE COLOR PERFECT TONING

- When lightening hair there is an underlying pigment exposed at each level.
- If desired you may wish to tone and neutralize the exposed pigment. The suggestions below are for the base of your toner formula from which you may personalize by blending additional Pure Colors.

PURE COLOR PIGMENT SCALE



LEVEL	UNDERLYING PIGMENT	PURE COLOR TONER
10. Lightest blonde	Pale Yellow	Equal 9V + 00
9. Very Light blonde	Yellow	9V
8. Light Blonde	Yellow/Orange	9NA
7. Medium Blonde	Orange	7B
6. Dark Blonde	Red/Orange	Equal 7NA + 7B
5. Light Brown	Red	5NA
4. Medium Brown	Red/Violet	2 Parts 5NA + 1 Part 3N
3. Dark Brown	Violet	N/A
2. Very Dark Brown	Blue/Violet	N/A
1. Black	Blue	N/A

EXAMPLE 1:
Current Level 10
Desired Level 7
Fill With 7G & 9C

EXAMPLE 2:
Current Level 10
Porous Hair
Desired Level 6
Do Maximum Repair
Fill With 7G & 7C

TO SELECT FILL FORMULA COLORS FOLLOW PIGMENT SCALE

Going Level:	Replace Color Level:
10 to 8	9 Gold
8 To 6	7 Gold & Orange
5 Or Darker	5 Gold, Orange & Red